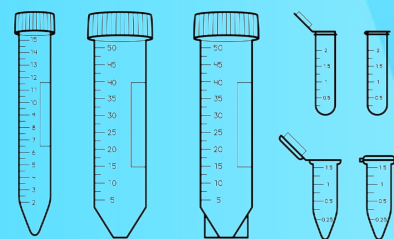
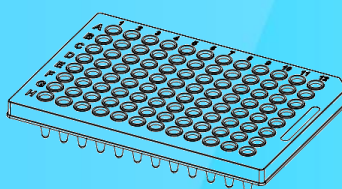
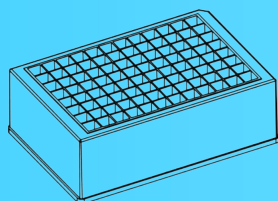
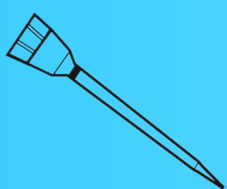




# Suzhou Ace Biomedical Technology Co., Ltd

Your Trusted Partner for Lab and Medical Solutions

## Catalog



Guarding Health Securing Futures

# COMPANY PROFILE

Suzhou ACE Biomedical Technology Co., Ltd. is a leading manufacturer of high-performance disposable medical consumables and laboratory plastics, serving hospitals, clinics, diagnostic laboratories, and life science research institutions worldwide. With 15+ years of expertise in life science polymer R&D, we deliver innovative, eco-conscious, and ergonomic solutions that redefine efficiency in biomedical workflows.

## Core Strengths:

- 👍 **Premium Quality Control:** All products are manufactured in ISO-certified Class 100,000 cleanrooms using medical-grade virgin polymers, consistently exceeding ISO 13485 and CE standards.
- 👍 **Advanced Manufacturing:** Equipped with AI-driven precision molding systems and supported by a global R&D team specializing in biomedical material science.
- 👍 **End-to-End Customization:** From OEM/ODM partnerships to branded distribution networks, we provide tailored solutions for IVD, clinical, and research applications.

## Global Impact:

- 🌐 **Rapidly expanding across 30+ countries** through strategic alliances with distributors and healthcare institutions.

- 🔧 **Recognized for zero-defect delivery, rapid prototyping capabilities, and 24/7 multilingual technical support.**

## Our Promise:

"Beyond supplying products, we build partnerships. Every ACE Biomedical solution is engineered to empower healthcare professionals, accelerate diagnostics, and safeguard tomorrow's discoveries."



# CONTENTS

## \*Pipette Tip Series

- 01** Tecan LiHa Pipette Tips
- 03** Tecan MCA Pipette Tips
- 04** Hamilton CO-RE Pipette Tips
- 06** Beckman(Biomek) Pipette Tips
- 07** MGI SP-960 / Agilent Pipette Tips
- 08** Rainin LTS Pipette Tips
- 09** INTEGRA Pipette Tips
- 10** Thermo Fisher ClipTip Pipette Tips
- 11** Eppendorf Pipette Tips
- 12** Universal Pipette Tips

## \*Well Plate Series

- 17** 96 Well Square Deep Well Plate
- 18** 96 Well Round Deep Well Plate
- 19** 24&48 Well Plate
- 20** 384 Well Plate
- 21** Silicone Sealing Mat
- 22** Kingfisher Flex Deep Well Plate & Tip Combs
- 23** Sealing Films

## \*PCR Series

- 25** 96 PCR Plate
- 26** 384 PCR Plate
- 27** PCR Tube

## \*Cell Culture Consumables

- 29** Cell Culture Plate
- 30** Serological Pipette

## \*Tubes & Bottles

- 32** Screw Cap Cryovial Tube
- 33** Centrifuge Tube
- 34** Spin Columns
- 35** Plastic Reagent Bottle

## \*Medical Consumables

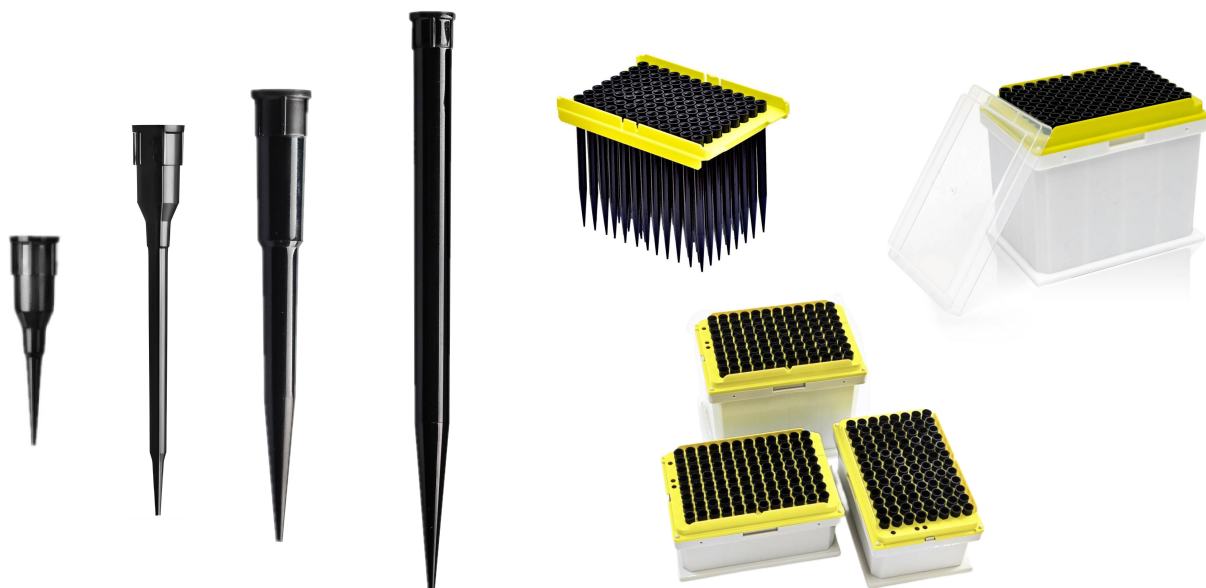
- 38** Ear Thermometer Probe Cover
- 39** Oral/Axillary/Rectal Thermometer Probe cover
- 40** Ear Otoscope Specula
- 41** Digital Thermometer Cover
- 42** Luer Cap
- 43** Injection Pen



## Pipette Tip Series



## TECAN LiHa Pipette Tips



### Features:

- ◆ Low percentage coefficient of variation (%CV)
- ◆ Available capacities: 20  $\mu$ L | 50  $\mu$ L | 200  $\mu$ L | 1,000  $\mu$ L
- ◆ Certified compatibility with: Tecan®: Genesis Freedom®/Freedom Evo®/Miniprep (LiHa-1/-4/-8), Aurora Biomed™: Versa® 8-Channel, robotic liquid level sensing tips with Tecan®-optimized geometry
- ◆ 20 $\mu$ L, 50 $\mu$ L, 200 $\mu$ L, 1000 $\mu$ L Tecan-Style Robotic Liquid Level Sensing tips
- ◆ Certified DNase-free, RNase-free, endotoxin-free, bioburden-free, and pyrogen-free

**Specification:** 20uL/50 $\mu$ L/200 $\mu$ L/1000 $\mu$ L(Conductive/Clear, Filter/without filter optional)



PART NO	MATERIAL	VOLUME	COLOR	FILTER	PCS/RACK	RACK/CASE	PCS /CASE
A-TP20-96-B	PP	20μL	Black,Conductive		96	24	2304
A-TP50-96-B	PP	50μL	Black,Conductive		96	24	2304
A-TP200-96-B	PP	200μL	Black,Conductive		96	24	2304
A-TP1000-96-B	PP	1000μL	Black,Conductive		96	16	1536
A-TP20-96-BF	PP	20μL	Black,Conductive	✓	96	24	2304
A-TP50-96-BF	PP	50μL	Black,Conductive	✓	96	24	2304
A-TP200-96-BF	PP	200μL	Black,Conductive	✓	96	24	2304
A-TP1000-96-BF	PP	1000μL	Black,Conductive	✓	96	16	1536
A-TP20-96-N	PP	20μL	Clear, Non-Conductive		96	24	2304
A-TP50-96-N	PP	50μL	Clear, Non-Conductive		96	24	2304
A-TP200-96-N	PP	200μL	Clear, Non-Conductive		96	24	2304
A-TP1000-96-N	PP	1000μL	Clear, Non-Conductive		96	16	1536
A-TP20-96-NF	PP	20μL	Clear, Non-Conductive	✓	96	24	2304
A-TP50-96-NF	PP	50μL	Clear, Non-Conductive	✓	96	24	2304
A-TP200-96-NF	PP	200μL	Clear, Non-Conductive	✓	96	24	2304
A-TP1000-96-NF	PP	1000μL	Clear, Non-Conductive	✓	96	16	1536





### Features:

- ◆Certified DNase-free, RNase-free, endotoxin-free, bioburden-free, and pyrogen-free
- ◆Low percentage coefficient of variation (%CV)
- ◆Available capacities: 50  $\mu$ L | 200  $\mu$ L
- ◆Compatibility:Tecan™ Liquid Handling Platforms with Te-MO 96 Multichannel Arm

**Specification:** 50 $\mu$ L/200 $\mu$ L(Filter/without filter optional)

PART NO	MATERIAL	VOLUME	COLOR	FILTER	PCS/RACK	RACK/CASE	PCS /CASE
A-MCA50-96-N	PP	50 $\mu$ L	Clear		96	50	4800
A-MCA200-96-N	PP	200 $\mu$ L	Clear		96	50	4800
A-MCA50-96-NF	PP	50 $\mu$ L	Clear	✓	96	50	4800
A-MCA200-96-NF	PP	200 $\mu$ L	Clear	✓	96	50	4800
A-MCA50-96-8N	PP	50 $\mu$ L	Clear		96	80	7680
A-MCA200-96-8N	PP	200 $\mu$ L	Clear		96	80	7680



## HAMILTON CO-RE Pipette Tips



### Features:

- ◆Black conductive tip for automated level sensing
- ◆Manufactured from virgin carbon impregnated polypropylene
- ◆Integral o-ring for full CO-RE compatibility
- ◆Disposable tip racks are directly compatible with MICROLAB platforms
- ◆Capacity options: 50µL / 300µL / 1000µL
- ◆Supports HAMILTON MICROLAB® STAR and NIMBUS workstations

**Specification:** 50µL, 300µL, 1000µL (Conductive/Clear, Filter/without filter optional)



PART NO	MATERIAL	VOLUME	COLOR	FILTER	PCS/RACK	RACK/BOX	PCS /CASE
A-HP50-96-B	PP	50μL	Black,Conductive		96	5	5760
A-HP300-96-B	PP	300μL	Black,Conductive		96	5	5760
A-HP300-96-BL	PP	300μL,Extended	Black,Conductive		96	5	3840
A-HP1000-96-B	PP	1000μL	Black,Conductive		96	5	3840
A-HP50-96-BF	PP	50μL	Black,Conductive	✓	96	5	5760
A-HP300-96-BF	PP	300μL	Black,Conductive	✓	96	5	5760
A-HP300-96-BLF	PP	300μL,Extended	Black,Conductive	✓	96	5	3840
A-HP1000-96-BF	PP	1000μL	Black,Conductive	✓	96	5	3840
A-HP50-96-N	PP	50μL	Clear,Non-Conductive		96	5	5760
A-HP300-96-N	PP	300μL	Clear,Non-Conductive		96	5	5760
A-HP300-96-NL	PP	300μL,Extended	Clear,Non-Conductive		96	5	3840
A-HP1000-96-N	PP	1000μL	Clear,Non-Conductive		96	5	3840
A-HP50-96-NF	PP	50μL	Clear,Non-Conductive	✓	96	5	5760
A-HP300-96-NF	PP	300μL	Clear,Non-Conductive	✓	96	5	5760
A-HP300-96-NLF	PP	300μL,Extended	Clear,Non-Conductive	✓	96	5	3840
A-HP1000-96-NF	PP	1000μL	Clear,Non-Conductive	✓	96	5	3840
A-HP50-96-BS	PP	50μL	Black,Conductive		96	1	2304
A-HP300-96-BS	PP	300μL	Black,Conductive		96	1	2304
A-HP300-96-BLS	PP	300μL,Extended	Black,Conductive		96	1	1536
A-HP1000-96-BS	PP	1000μL	Black,Conductive		96	1	1536
A-HP50-96-BSF	PP	50μL	Black,Conductive	✓	96	1	2304
A-HP300-96-BSF	PP	300μL	Black,Conductive	✓	96	1	2304
A-HP300-96-BLSF	PP	300μL,Extended	Black,Conductive	✓	96	1	1536
A-HP1000-96-BSF	PP	1000μL	Black,Conductive	✓	96	1	1536
A-HP50-96-NS	PP	50μL	Clear,Non-Conductive		96	1	2304
A-HP300-96-NS	PP	300μL	Clear,Non-Conductive		96	1	2304
A-HP300-96-NLS	PP	300μL,Extended	Clear,Non-Conductive		96	1	1536
A-HP1000-96-NS	PP	1000μL	Clear,Non-Conductive		96	1	1536
A-HP50-96-NSF	PP	50μL	Clear,Non-Conductive	✓	96	1	2304
A-HP300-96-NSF	PP	300μL	Clear,Non-Conductive	✓	96	1	2304
A-HP300-96-NLSF	PP	300μL,Extended	Clear,Non-Conductive	✓	96	1	1536
A-HP1000-96-NSF	PP	1000μL	Clear,Non-Conductive	✓	96	1	1536

## BECKMAN(BIOMEK) Pipette Tips



### Features:

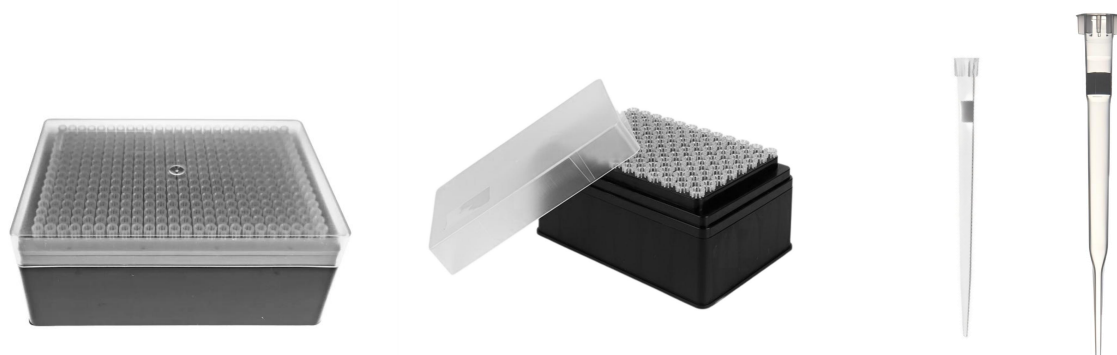
- ◆ Tips compatible with Beckman Coulter Biomek FX, Biomek NX, Biomek 3000,4000 & Multimek,i-series (i-3000,i-5000,i-7000)
- ◆ Certified RNase-free, DNase-free & Pyrogen-free
- ◆ Manufactured from clear Polypropylene
- ◆ Tip box format: 96
- ◆ Filtered or non-filtered, sterile or non-sterile, standard or Maxymum Recovery

**Specification:** 20μL/50μL/250μL/1025μL(Filter/without filter optional)

PART NO	MATERIAL	VOLUME	COLOR	FILTER	PCS/RACK	RACK/CASE	PCS /CASE
A-BEK20-96-N	PP	20μL	Clear		96	50	4800
A-BEK50-96-N	PP	50μL	Clear		96	50	4800
A-BEK250-96-N	PP	250μL	Clear		96	50	4800
A-BEK1000-96-N	PP	1025μL	Clear		96	30	2880
A-BEK20-96-NF	PP	20μL	Clear	✓	96	50	4800
A-BEK50-96-NF	PP	50μL	Clear	✓	96	50	4800
A-BEK250-96-NF	PP	250μL	Clear	✓	96	50	4800
A-BEK1000-96-NF	PP	1025μL	Clear	✓	96	30	2880



# MGI SP/AGILENT Bravo Pipette Tips



## Features:

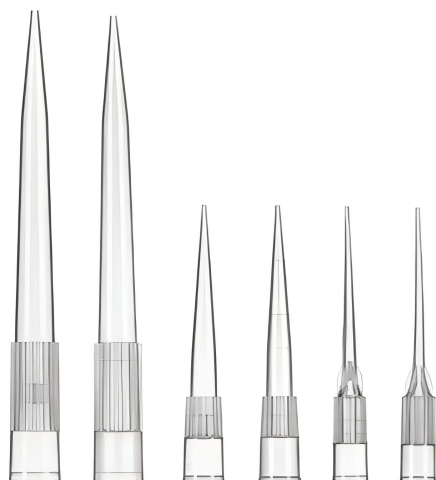
- ♦Optimized for: MGI SP Series automation platforms, Agilent systems(Velocity VPrep, Bravo 96LT/8LT liquid handlers)
- ♦Certified DNase-free, RNase-free, and pyrogen-free
- ♦Standard 96-well (ANSI/SBS footprint) & 384-well rack configurations for seamless integration
- ♦Applications: NGS library prep, High-throughput screening (HTS), Clinical diagnostics, Biobanking

**Specification:** 30μL/70μL/250μL(Filter/without filter optional)

PART NO	MATERIAL	VOLUME	COLOR	FILTER	PCS/RACK	RACK/CASE	PCS /CASE
CRA30-AG-TP	PP	30μL	Clear		384	50	19200
CRAF30-AG-TP	PP	30μL	Clear	✓	384	50	19200
CRA70-AG-TP	PP	70μL	Clear		384	50	19200
CRAF70-AG-TP	PP	70μL	Clear	✓	384	50	19200
CRA70-A-TP	PP	70μL	Clear		96	50	4800
CRAF70-A-TP	PP	70μL	Clear	✓	96	50	4800
CRA250-A-TP	PP	250μL	Clear		96	50	4800
CRAF250-A-TP	PP	250μL	Clear	✓	96	50	4800



## RAININ LTS Pipette Tips



### Features:

- ◆ Specifically designed for Rainin LTS LiteTouch Pipettes
- ◆ Perfect seal with fine point precision and minimal surface area to enhance accuracy
- ◆ Low-retention material virtually eliminates sample retention and improves pipetting precision
- ◆ Color-coded racks for quick identification: 20µL (Red), 200µL (Green), 300µL (Yellow), 1000µL (Blue)
- ◆ Eco-friendly tray design with 35% less plastic than standard racks, multi-channel compatible, and stackable for storage

**Specification:** 20µL/200µL/300µL/1000µL(Filter/without filter optional)

PART NO	MATERIAL	VOLUME	COLOR	FILTER	PCS/RACK	RACK/CASE	PCS /CASE
A-LTS20-96-N	PP	20µL	Clear		96	50	4800
A-LTS200-96-N	PP	200µL	Clear		96	50	4800
A-LTS300-96-N	PP	300µL	Clear		96	50	4800
A-LTS1000-96-N	PP	1000µL	Clear		96	50	4800
A-LTS20-96-NF	PP	20µL	Clear	✓	96	50	4800
A-LTS200-96-NF	PP	200µL	Clear	✓	96	50	4800
A-LTS300-96-NF	PP	300µL	Clear	✓	96	50	4800
A-LTS1000-96-NF	PP	1000µL	Clear	✓	96	50	4800

## INTEGRA Pipette Tips



### Features:

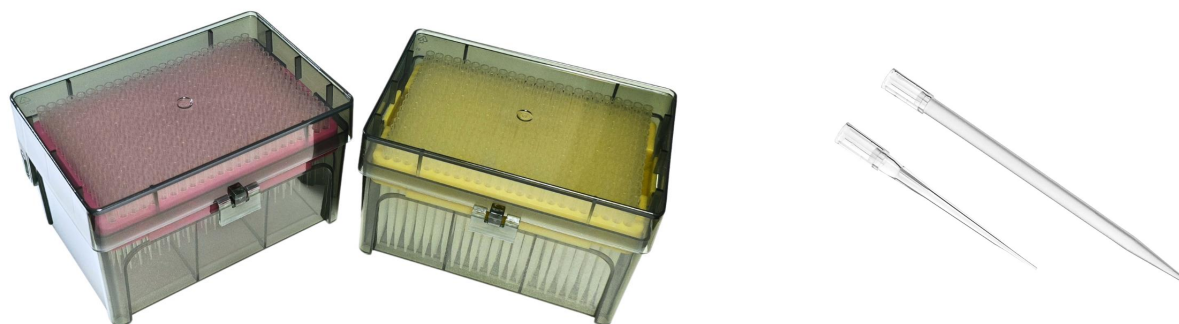
- ◆ Available in standard or filtered configurations, compatible with 96-well and 384-well plate formats
- ◆ DNase/RNase-free, and free from endotoxins, bioburden, and pyrogens
- ◆ Low coefficient of variation (%CV) for reliable reproducibility
- ◆ Fully compatible with INTEGRA pipetting systems (VIAFLO, VOYAGER, EVOLVE)

**Specification:** 12.5μL/125μL/300μL/1000μL(Filter/without filter optional)

PART NO	MATERIAL	VOLUME	COLOR	FILTER	PCS/RACK	RACK/CASE	PCS /CASE
A-IN0125-384-N	PP	12.5μL	Clear		384	50	19200
A-IN125-384-N	PP	125μL	Clear		384	50	19200
A-IN300-96-N	PP	300μL	Clear		96	50	4800
A-IN1000-96-N	PP	1000μL	Clear		96	50	4800
A-IN0125-384-NF	PP	12.5μL	Clear	✓	384	50	19200
A-IN125-384-NF	PP	125μL	Clear	✓	384	50	19200
A-IN300-96-NF	PP	300μL	Clear	✓	96	50	4800
A-IN1000-96-NF	PP	1000μL	Clear	✓	96	50	4800



# THERMO FISHER ClipTip Pipette Tips



## Features:

- ♦High-Throughput Design: Optimized for 384-well plate workflows
- ♦Certified DNase-free, RNase-free, endotoxin-free, bioburden-free, and pyrogen-free
- ♦Low retention surface technology minimizes sample loss
- ♦Fully validated for Thermo Fisher Scientific™ F1-ClipTip® and E1-ClipTip® pipetting systems

**Specification:** 12.5μL/30μL/125μL(Filter/without filter optional)

PART NO	MATERIAL	VOLUME	COLOR	FILTER	PCS/RACK	RACK/CASE	PCS /CASE
A-TM0125-384-N	PP	12.5μL	Clear		384	50	19200
A-TM30-384-N	PP	30μL	Clear		384	50	19200
A-TM125-384-N	PP	125μL	Clear		384	50	19200
A-TM0125-384-NF	PP	12.5μL	Clear	✓	384	50	19200
A-TM30-384-NF	PP	30μL	Clear	✓	384	50	19200
A-TM125-384-NF	PP	125μL	Clear	✓	384	50	19200

## epT.I.P.S. 384 Pipette Tips



### Features:

- ◆Designed for 384-well plate workflows
- ◆Certified Purity: Free from DNase, RNase, endotoxins, bioburden, and pyrogens
- ◆Low retention surfaces maximize sample recovery
- ◆Compatibility:Eppendorf Research® plus and Xplorer® plus 16- and 24-channel pipettes, as well as 20 µL and 100 µL Move It® adjustable tip spacing pipettes.

**Specification:** 20µL/100µL(Filter/without filter optional)

PART NO	MATERIAL	VOLUME	COLOR	FILTER	PCS/RACK	RACK/CASE	PCS /CASE
A-EP20-384-N	PP	20µL	Clear		384	50	19200
A-EP100-384-N	PP	100µL	Clear		384	50	19200
A-EP20-384-NF	PP	20µL	Clear	✓	384	50	19200
A-EP100-384-NF	PP	100µL	Clear	✓	384	50	19200

## UNIVERSAL Pipette Tips



### Features:

- ◆ Universal Pipette Compatibility: Fits most single- and multichannel pipettes from leading brands (Eppendorf, Thermo, Gilson, D-LAB, Axygen, Sartorius, BIOHIT, and more)
- ◆ Clear volume graduated markings for accurate liquid handling
- ◆ Manufactured from medical-grade, transparent polypropylene for visibility and durability
- ◆ Filtered/non-filtered and sterile/non-sterile options to suit your workflow
- ◆ Guaranteed RNase-, DNase-, Human DNA-, and pyrogen-free for sensitive applications

**Specification:** 10 $\mu$ L/10 $\mu$ L Extended/20 $\mu$ L/50 $\mu$ L/100 $\mu$ L/200 $\mu$ L/1000 $\mu$ L/1250 $\mu$ L(Filter/without filter optional)

Specification	Part No	Packing
10 $\mu$ L,Clear	A-UPT10-96-N	96 tips/rack,50 racks/case
10 $\mu$ L,Extended,Clear	A-UPT10-96-NL	96 tips/rack,50 racks/case
200 $\mu$ L,Clear	A-UPT200-96-N	96 tips/rack,50 racks/case
300 $\mu$ L,Clear	A-UPT300-96-N	96 tips/rack,50 racks/case
1000 $\mu$ L,Clear	A-UPT1000-96-N	96 tips/rack,50 racks/case
1250 $\mu$ L,Clear	A-UPT1250-96-N	96 tips/rack,50 racks/case
10 $\mu$ L,Clear,With Filter	A-UPT10-96-NF	96 tips/rack,50 racks/case
10 $\mu$ L,Clear,Extended,With Filter	A-UPT10-96-NLF	96 tips/rack,50 racks/case
20 $\mu$ L,Clear,With Filter	A-UPT20-96-NF	96 tips/rack,50 racks/case
50 $\mu$ L,Clear,With Filter	A-UPT50-96-NF	96 tips/rack,50 racks/case
100 $\mu$ L,Clear,With Filter	A-UPT100-96-NF	96 tips/rack,50 racks/case
200 $\mu$ L,Clear,With Filter	A-UPT200-96-NF	96 tips/rack,50 racks/case
300 $\mu$ L,Clear,With Filter	A-UPT300-96-NF	96 tips/rack,50 racks/case
1000 $\mu$ L,Clear,With Filter	A-UPT1000-96-NF	96 tips/rack,50 racks/case
1250 $\mu$ L,Clear,With Filter	A-UPT1250-96-NF	96 tips/rack,50 racks/case



## UNIVERSAL Pipette Tips



SPECIFICATION	PART NO	PACKING
10μL,Clear	A-UPT10-96-B	1000 tips/bag,10bags/case
10μL,Extended,Clear	A-UPT10-96-BL	1000 tips/bag,10bags/case
200μL,Clear	A-UPT200-96-B	1000 tips/bag,10bags/case
300μL,Clear	A-UPT300-96-B	1000 tips/bag,10bags/case
1000μL,Clear	A-UPT1000-96-B	1000 tips/bag,5bags/case
1250μL,Clear	A-UPT1250-96-B	1000 tips/bag,5bags/case
10μL,Clear,With Filter	A-UPT10-96-BF	1000 tips/bag,10bags/case
10μL,Clear,Extended,With Filter	A-UPT10-96-BLF	1000 tips/bag,10bags/case
20μL,Clear,With Filter	A-UPT20-96-BF	1000 tips/bag,10bags/case
50μL,Clear,With Filter	A-UPT50-96-BF	1000 tips/bag,10bags/case
100μL,Clear,With Filter	A-UPT100-96-BF	1000 tips/bag,10bags/case
200μL,Clear,With Filter	A-UPT200-96-BF	1000 tips/bag,10bags/case
300μL,Clear,With Filter	A-UPT300-96-BF	1000 tips/bag,10bags/case
1000μL,Clear,With Filter	A-UPT1000-96-BF	1000 tips/bag,5bags/case
1250μL,Clear,With Filter	A-UPT1250-96-BF	1000 tips/bag,5bags/case

# UNIVERSAL Pipette Tips (Low Retention)



SPECIFICATION	PART NO	PACKING
10μL,Clear	A-UPT10-96-NL	96 tips/rack,50 racks/case
10μL,Extended,Clear	A-UPT10-96-NLL	96 tips/rack,50 racks/case
200μL,Clear	A-UPT200-96-NL	96 tips/rack,50 racks/case
300μL,Clear	A-UPT300-96-NL	96 tips/rack,50 racks/case
1000μL,Clear	A-UPT1000-96-NL	96 tips/rack,50 racks/case
1250μL,Clear	A-UPT1250-96-NL	96 tips/rack,50 racks/case
10μL,Clear,With Filter	A-UPT10-96-NLF	96 tips/rack,50 racks/case
10μL,Clear,Extended,With Filter	A-UPT10-96-NLLF	96 tips/rack,50 racks/case
20μL,Clear,With Filter	A-UPT20-96-NLF	96 tips/rack,50 racks/case
50μL,Clear,With Filter	A-UPT50-96-NLF	96 tips/rack,50 racks/case
100μL,Clear,With Filter	A-UPT100-96-NLF	96 tips/rack,50 racks/case
200μL,Clear,With Filter	A-UPT200-96-NLF	96 tips/rack,50 racks/case
300μL,Clear,With Filter	A-UPT300-96-NLF	96 tips/rack,50 racks/case
1000μL,Clear,With Filter	A-UPT1000-96-NLF	96 tips/rack,50 racks/case
1250μL,Clear,With Filter	A-UPT1250-96-NLF	96 tips/rack,50 racks/case
10μL,Clear	A-UPT10-96-BL	1000 tips/bag,10bags/case
10μL,Extended,Clear	A-UPT10-96-BLL	1000 tips/bag,10bags/case
200μL,Clear	A-UPT200-96-BL	1000 tips/bag,10bags/case
300μL,Clear	A-UPT300-96-BL	1000 tips/bag,10bags/case
1000μL,Clear	A-UPT1000-96-BL	1000 tips/bag,5bags/case
1250μL,Clear	A-UPT1250-96-BL	1000 tips/bag,5bags/case
10μL,Clear,With Filter	A-UPT10-96-BLF	1000 tips/bag,10bags/case
10μL,Clear,Extended,With Filter	A-UPT10-96-BLLF	1000 tips/bag,10bags/case
20μL,Clear,With Filter	A-UPT20-96-BLF	1000 tips/bag,10bags/case
50μL,Clear,With Filter	A-UPT50-96-BLF	1000 tips/bag,10bags/case
100μL,Clear,With Filter	A-UPT100-96-BLF	1000 tips/bag,10bags/case
200μL,Clear,With Filter	A-UPT200-96-BLF	1000 tips/bag,10bags/case
300μL,Clear,With Filter	A-UPT300-96-BLF	1000 tips/bag,10bags/case
1000μL,Clear,With Filter	A-UPT1000-96-BLF	1000 tips/bag,5bags/case
1250μL,Clear,With Filter	A-UPT1250-96-BLF	1000 tips/bag,5bags/case

# 5mL&10mL *UNIVERSAL* Pipette Tips



SPECIFICATION	PART NO	PACKING
5mL,Clear (Compatible with Eppendorf)	A-UPT5000-B-N	100 tips/bag,10 bags/case
5mL,Clear,With Filter (Compatible with Eppendorf)	A-UPT5000-B-NF	100 tips/bag,10 bags/case
5mL,Clear (Compatible with Thermo)	A-UPT5000T-B-N	100 tips/bag,10 bags/case
5mL,Clear,With Filter (Compatible with Thermo)	A-UPT5000T-B-NF	100 tips/bag,10 bags/case
5mL,Clear (Compatible with Eppendorf)	A-UPT5000-24-N	24 tips/rack,30 racks/case
5mL,Clear,With Filter (Compatible with Eppendorf)	A-UPT5000-24-NF	24 tips/rack,30 racks/case
5mL,Clear (Compatible with Thermo)	A-UPT5000T-40-N	40 tips/rack,30 racks/case
5mL,Clear,With Filter (Compatible with Thermo)	A-UPT5000T-40-NF	40 tips/rack,30 racks/case
10mL,Clear (Compatible with Eppendorf)	A-UPT10000-B-N	100 tips/bag,10 bags/case
10mL,Clear,With Filter (Compatible with Eppendorf)	A-UPT10000-B-NF	100 tips/bag,10 bags/case
10mL,Clear (Compatible with Thermo)	A-UPT10000T-B-N	100 tips/bag,10 bags/case
10mL,Clear,With Filter (Compatible with Thermo)	A-UPT10000T-B-NF	100 tips/bag,10 bags/case
10mL,Clear (Compatible with Eppendorf)	A-UPT10000-24-N	24 tips/rack,30 racks/case
10mL,Clear,With Filter (Compatible with Eppendorf)	A-UPT5000-24-NF	24 tips/rack,30 racks/case
10mL,Clear (Compatible with Thermo)	A-UPT10000T-24-N	24 tips/rack,30 racks/case
10mL,Clear,With Filter (Compatible with Thermo)	A-UPT10000T-24-NF	24 tips/rack,30 racks/case



## Well Plate Series



## 96 WELL SQUARE Deep Well Plate



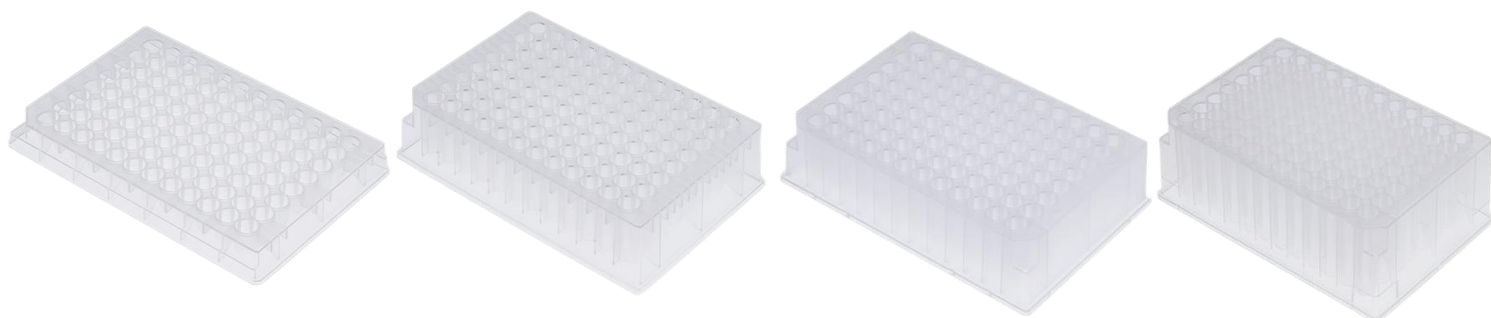
### Features:

- ◆V- or U-shaped bottom options to suit diverse experimental needs
- ◆Conforms to SBS/ANSI 1-2004 standards for seamless integration with automated systems
- ◆High-stability, imported polypropylene (PP) ensures chemical inertness and reagent compatibility
- ◆DNase/RNase-free and non-pyrogenic, validated for sensitive applications
- ◆Compatible with adhesive seals, mat caps, and heat seals for workflow adaptability

Specification: 1.2mL/1.6mL/2.0mL/2.2mL

PART NO	MATERIAL	VOLUME	BOTTOM	STERILE	PCS/BAG	BAG/CASE	PCS /CASE
A-DP12VS-9-N	PP	1.2mL	V		10	10	100
A-DP16US-9-N	PP	1.6mL	U		5	10	50
A-DP20US-9-N	PP	2.0mL	U		5	10	50
A-DP22VS-9-N	PP	2.2mL	V		5	10	50
A-DP12VS-9-NS	PP	1.2mL	V	✓	10	10	100
A-DP16US-9-NS	PP	1.6mL	U	✓	5	10	50
A-DP20US-9-NS	PP	2.0mL	U	✓	5	10	50
A-DP22VS-9-NS	PP	2.2mL	V	✓	5	10	50

## 96 WELL ROUND Deep Well Plate



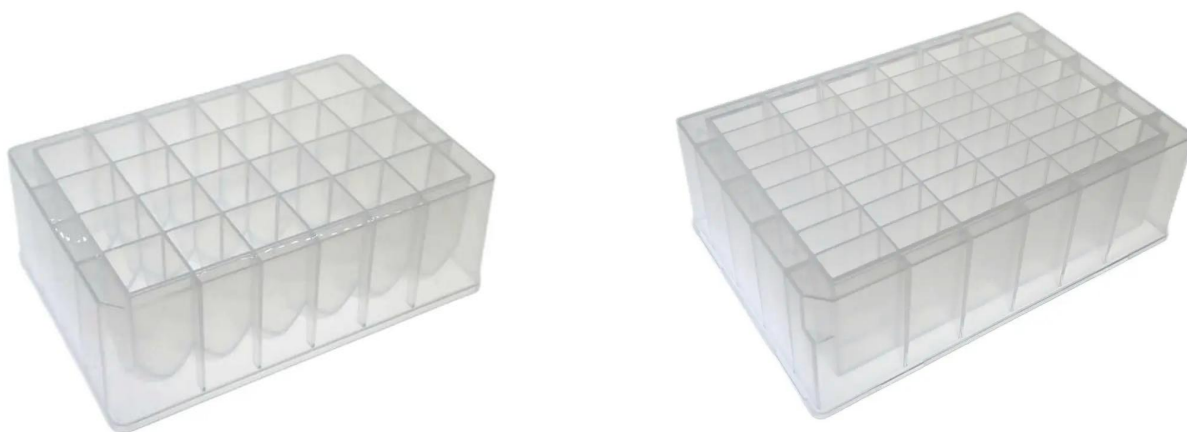
### Features:

- ◆V- or U-shaped bottom options to suit diverse experimental needs
- ◆Conforms to SBS/ANSI 1-2004 standards for seamless integration with automated systems
- ◆High-stability, imported polypropylene (PP) ensures chemical inertness and reagent compatibility
- ◆DNase/RNase-free and non-pyrogenic, validated for sensitive applications
- ◆Compatible with adhesive seals, mat caps, and heat seals for workflow adaptability

**Specification:** 350uL/1.2mL/1.3mL/2.0mL

PART NO	MATERIAL	VOLUME	BOTTOM	STERILE	PCS/BAG	BAG/CASE	PCS /CASE
A-DP35UR-9-N	PP	350uL	U		10	10	100
A-DP35VR-9-N	PP	350uL	V		10	10	100
A-DP12UR-9-N	PP	1.2mL	U		5	10	50
A-DP13UR-9-N	PP	1.3mL	U		5	10	50
A-DP13VR-9-N	PP	1.3mL	V		5	10	50
A-DP20UR-9-N	PP	2.0mL	U		5	10	50
A-DP35UR-9-NS	PP	350uL	U	✓	10	10	100
A-DP35VR-9-NS	PP	350uL	V	✓	10	10	100
A-DP12UR-9-NS	PP	1.2mL	U	✓	5	10	50
A-DP13UR-9-NS	PP	1.3mL	U	✓	5	10	50
A-DP13VR-9-NS	PP	1.3mL	V	✓	5	10	50
A-DP20UR-9-NS	PP	2.0mL	U	✓	5	10	50

## 24 & 48 WELL PLATE



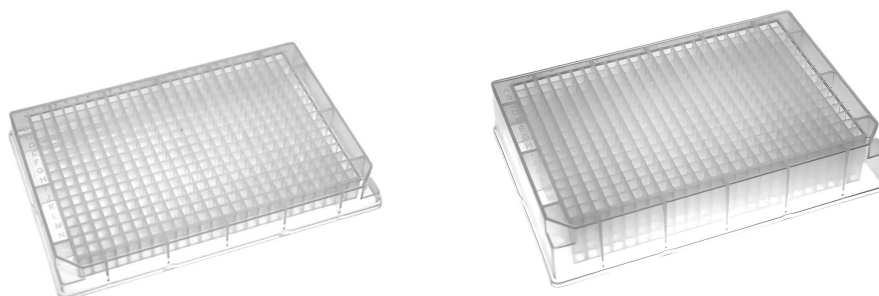
### Features:

- ◆V- or U-shaped bottom options to suit diverse experimental needs
- ◆Conforms to SBS/ANSI 1-2004 standards for seamless integration with automated systems
- ◆High-stability, imported polypropylene (PP) ensures chemical inertness and reagent compatibility
- ◆DNase/RNase-free and non-pyrogenic, validated for sensitive applications
- ◆Compatible with adhesive seals, mat caps, and heat seals for workflow adaptability

**Specification:** 5mL(48 well)/10mL(24well)

PART NO	MATERIAL	VOLUME	BOTTOM	STERILE	PCS/BAG	BAG/CASE	PCS /CASE
A-DP10US-24-N	PP	10mL	U		5	10	50
A-DP10US-24-NS	PP	10mL	U	✓	5	10	50
A-DP50VS-48-N	PP	5mL	V		5	10	50
A-DP50VS-48-NS	PP	5mL	V	✓	5	10	50

## 348 WELL PLATE



### Features:

- ◆V-shaped bottom
- ◆Conforms to SBS/ANSI 1-2004 standards for seamless integration with automated systems
- ◆High-stability, imported polypropylene (PP) ensures chemical inertness and reagent compatibility
- ◆DNase/RNase-free and non-pyrogenic, validated for sensitive applications
- ◆Compatible with adhesive seals, mat caps, and heat seals for workflow adaptability

**Specification:** 120uL/240uL,384 well

PART NO	MATERIAL	VOLUME	BOTTOM	STERILE	PCS/BAG	BAG/CASE	PCS /CASE
A-DP120VS-384-N	PP	120uL	V		10	10	100
A-DP120VS-384-NS	PP	120uL	V	✓	10	10	100
A-DP240VS-384-N	PP	240uL	V		10	10	100
A-DP240VS-384-NS	PP	240uL	V	✓	10	10	100

# SILICONE SEALING MAT



## Features:

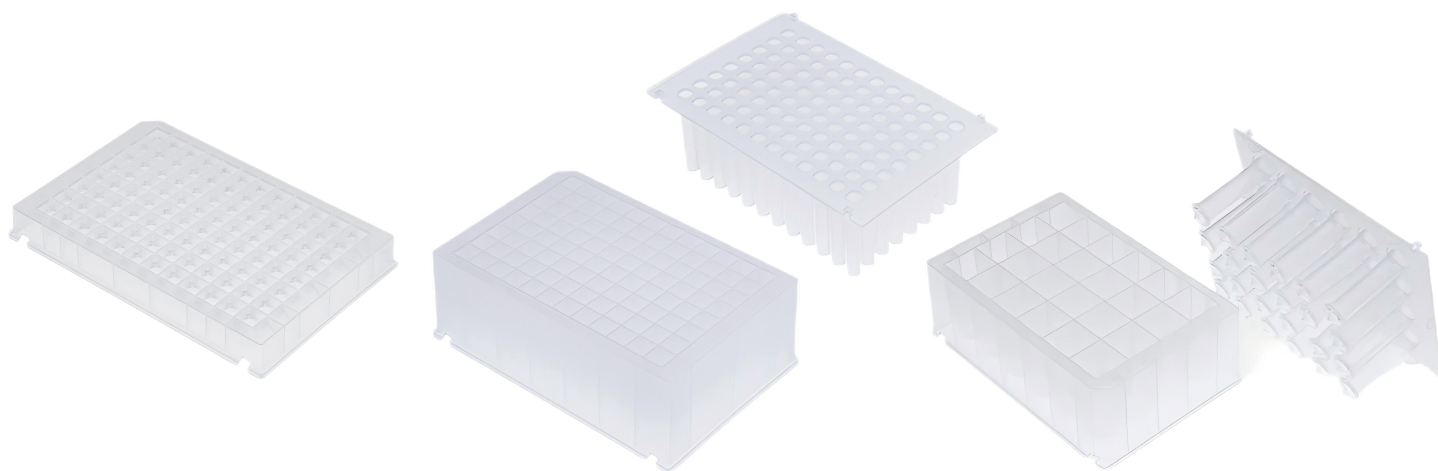
- ◆User-Friendly Design: Streamlined operation for effortless handling
- ◆Silicone mats deliver unmatched barrier defense against volatile solvents
- ◆Mats maintain integrity across a wide thermal range (-80°C to 121°C), adaptable to diverse application
- ◆DNase/RNase-free and pyrogen-free, validated for sensitive workflows
- ◆Silicone pre-slit caps enable pipette tip/probe insertion without cap damage, preserving sample integrity

**Specification:** Square-/Round-well,24 well/48 well/96 well/384 well

PART NO	MATERIAL	SPEC	APPLICATION	COLOR	PCS /CASE
A-SSM-S-96	Silicone	96-Square-well	96 Square well plate	Nature	500
A-SSM-R-83	Silicone	96-Round-well	96 Round well plate	Nature	500
A-SSM-R-73	Silicone	96-Round-well	96 Round well plate	Nature	500
A-SSM-R-PCR	Silicone	96-Round-well	96 well PCR plate	Nature	500
A-SSM-S-24	Silicone	24-Square-well	24 well plate	Nature	500
A-SSM-S-48	Silicone	48-Square-well	48 well plate	Nature	500
A-SSM-S-384	Silicone	384-Square-well	384 well plate	Nature	500
A-SSM-R-384	Silicone	384-Round-well	384 well PCR plate	Nature	500



## KINGFISHER FLEX Deep Well Plate & Tip Combs

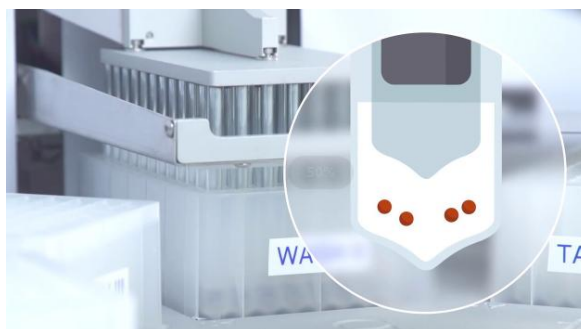
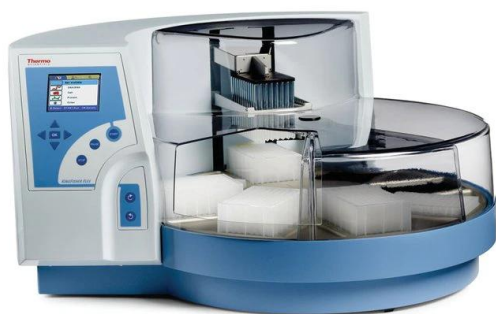


### Features:

- ◆Combs crafted from low-binding, virgin polypropylene—free from mold release agents or regrind, ensuring sample
- ◆Designed and validated for seamless integration with KingFisher™ FLEX™ Purification System and MagMAX™ platforms
- ◆Merged material claims (medical-grade + virgin PP) to emphasize purity and performance
- ◆Guaranteed DNase/RNase-free and non-pyrogenic for contamination-sensitive workflows
- ◆Compatible with adhesive seals and heat seals to adapt to diverse protocols

### Specification: 0.2mL/2.2mL/24-well/96-well

PART NO	SPEC	VOLUME	BOTTOM	STERILE	PCS/BAG	BAG/CASE	PCS /CASE
A-KF02VS-9-N	96 WELL	0.2mL	V	✓	10	5	50
A-KF22VS-9-N	96 WELL	2.2mL	V	✓	5	10	50
A-KFTC-9-N	96 WELL	X	V	✓	2	25	50
A-KF70VS-24-N	24 WELL	7mL	V	✓	5	10	50
A-KFTC-24-N	24 WELL	X	V	✓	1	50	50



## SEALING FILMS

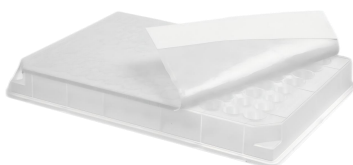


### Features:

- ◆Crystal-clear design ensures precision in high-sensitivity optical assays (e.g., fluorescence, luminescence)
- ◆Engineered for airtight seals even on raised-rim micro-plates, minimizing evaporation and cross-contamination
- ◆Pressure-sensitive adhesive enables quick, tool-free sealing with uniform adhesion
- ◆Guaranteed DNase/RNase-free and non-pyrogenic for contamination-sensitive workflows
- ◆Three options for plate sealing: Standard adhesive seals (peelable), Pressure-sensitive seals (repositionable), Heat seals (permanent, high-temperature resistant)

**Specification:** adhesive-seal ,pressure-sensitive adhesive-seal ,and heat-seal

PART NO	MATERIAL	SEALING	APPLICATION	PCS /BAG
A-SFRT-9795R	PE+Silicone(3M)	Pressure-sensitive	PCR	100
A-SFPE-500	PE	Adhesive	PCR	100
X-SFAL-100	Aluminum	Adhesive	PCR / Well Plate	100
X-SFAL-3801	Aluminum	Adhesive	PCR / Well Plate	100
A-SFAL-CPX-5	Aluminum	Heat-seal	Well Plate	100



A close-up photograph of a laboratory setting. A glass pipette with a red bulb is dispensing a red liquid into one of the wells of a clear plastic multi-well plate. The plate is resting on a metal stand. The background is a blurred blue gradient.

## PCR Series

## 96 PCR PLATE



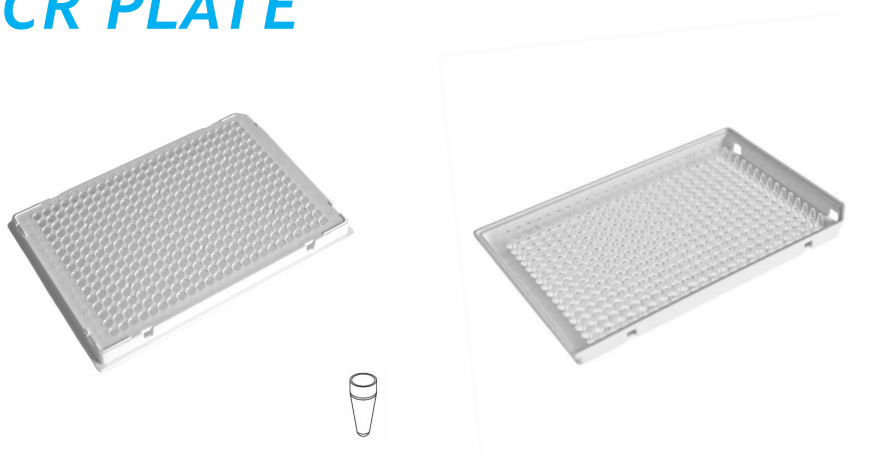
### Features:

- ◆Universal Compatibility: Broadly validated for use with leading thermal cyclers (e.g., Bio-Rad, Thermo Fisher, Eppendorf)
- ◆High-contrast alphanumeric well indexing ensures quick, error-free sample identification
- ◆Crystal-clear wells enable visual verification of sample volume and integrity
- ◆Ultra-thin, uniform well walls ensure rapid heat transfer and maximize reaction efficiency
- ◆Plate sealing options like film, foil, silicone mats and strip caps which reduce sample evaporation

**Specification:** 0.1mL/0.2mL, non-skirt/half-skirt/full-skirt

PART NO	MATERIAL	VOLUME	SPEC	COLOR	PCS/BOX	BOXES/CASE	PCS /CASE
A-PCR-01A12	PP	0.1mL	Non-skirt	Clear	10	5	50
A-PCR-02A12	PP	0.2mL	Non-skirt	Clear	10	5	50
A-PCR-01A1	PP	0.1mL	Half-skirt	Clear	10	5	50
A-PCR-02A1	PP	0.2mL	Half-skirt	Clear	10	5	50
A-PCR-01FS	PP	0.1mL	Full-skirt	Clear	10	5	50
A-PCR-02FS	PP	0.2mL	Full-skirt	Clear	10	5	50

## 384 PCR PLATE

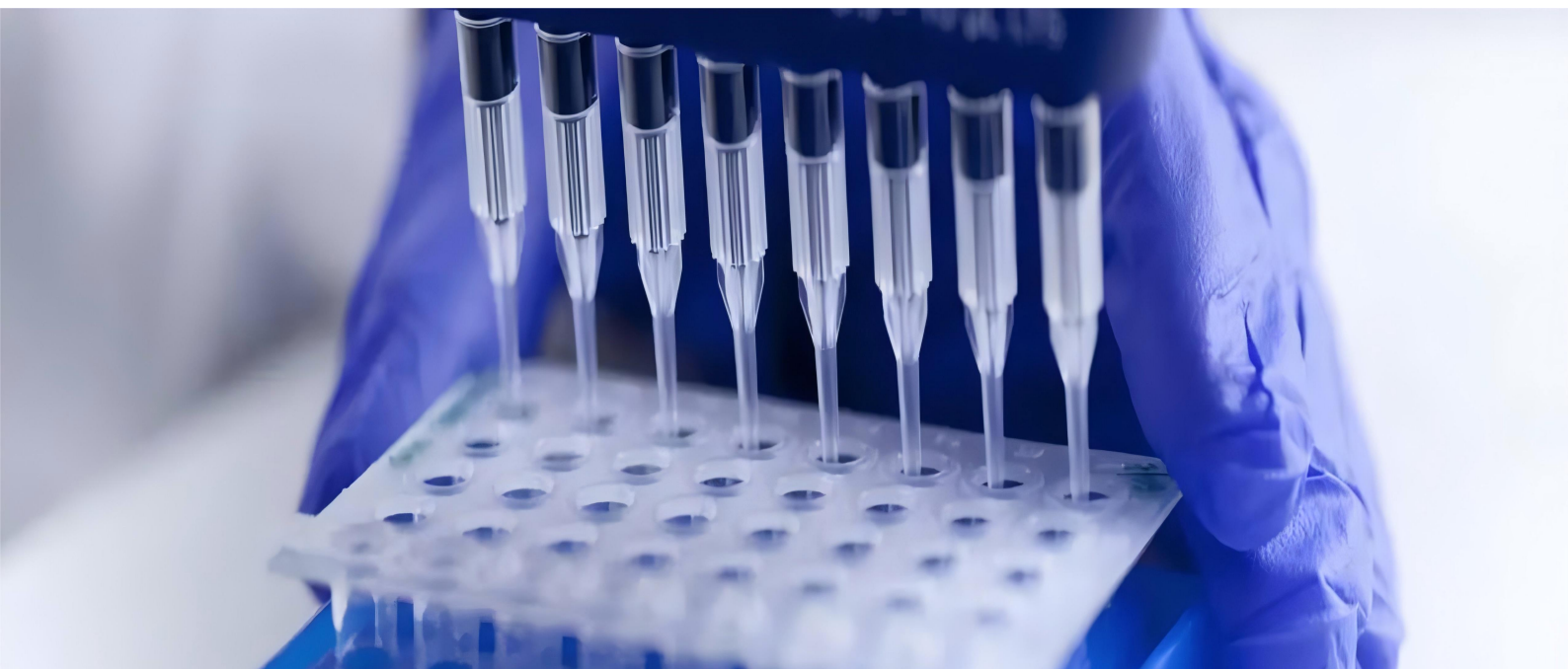


### Features:

- ◆Universal Compatibility: Broadly validated for use with leading thermal cyclers (e.g., Bio-Rad, Thermo Fisher, Eppendorf)
- ◆High-contrast alphanumeric well indexing ensures quick, error-free sample identification
- ◆Crystal-clear wells enable visual verification of sample volume and integrity
- ◆Ultra-thin, uniform well walls ensure rapid heat transfer and maximize reaction efficiency
- ◆Plate sealing options like film, foil, silicone mats and strip caps which reduce sample evaporation

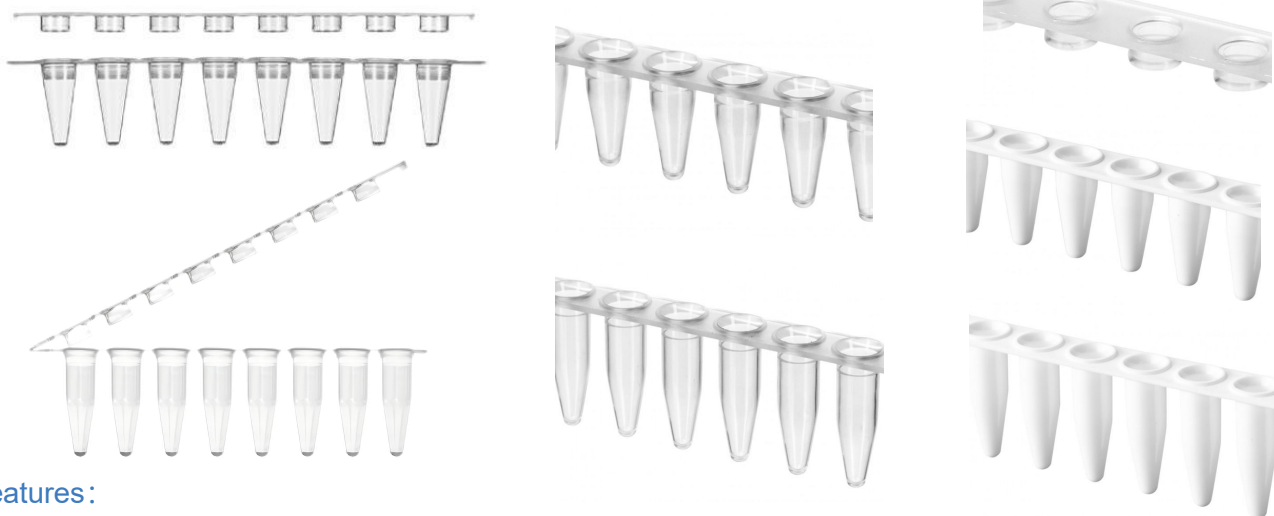
**Specification:** 40μL, Full-skirt, White Frame+Clear Tube

PART NO	MATERIAL	VOLUME	SPEC	COLOR	PCS/BOX	BOXES/CASE	PCS /CASE
A-PCR-384WC	PP	40μL	Full-skirt	White Frame +Clear Tube	10	5	50





## PCR TUBE



### Features:

- ◆PCR tube strips engineered to fit most thermal cyclers (e.g., Applied Biosystems®, Bio-Rad®, Eppendorf®)
- ◆Ultra-thin, uniform wall thickness maximizes thermal conductivity for consistent reaction efficiency
- ◆Flat caps (space-saving stacking) ensuring leak-proof closure
- ◆RNase/DNase-free and nonpyrogenic, validated for sensitive PCR/qPCR applications
- ◆Manufactured from 99.9% pure virgin polypropylene, free from contaminants or additives

**Specification:** 0.1mL/0.2mL, Clear/White Tube

PART NO	MATERIAL	VOLUME	COLOR	PCS/BOX	BOXES/CASE	PCS /CASE
A-PCR-8T-1N	PP	0.1mL	Clear	125	10	1250
A-PCR-8T-1W	PP	0.1mL	White	125	10	1250
A-PCR-8T-2N	PP	0.2mL	Clear	125	10	1250
A-PCR-8T-2W	PP	0.2mL	White	125	10	1250



## Cell Culture Consumables



# Cell Culture Plate



## Features:

- ◆ Edge protrusions ensure stable stacking of multiple plates
- ◆ Raised feet minimize surface contact and contamination risks
- ◆ High-contrast grid enables quick well identification, reducing errors
- ◆ Textured grips prevent slips during handling
- ◆ Ventilation holes allow gas exchange and temperature control when stacked
- ◆ Ultra-flat bottom ensures clarity for microscopic imaging

## Specification: 6-well/12-well/24-well/48-well/96-well/384-well

PART NO	MATERIAL	SPEC	TC-Treated	PACKING
A-CP-006-TC	PS	6-well	✓	Individually wrapped, 100 plates/case
A-CP-006-NT	PS	6-well		Individually wrapped, 100 plates/case
A-CP-012-TC	PS	12-well	✓	Individually wrapped, 100 plates/case
A-CP-012-NT	PS	12-well		Individually wrapped, 100 plates/case
A-CP-024-TC	PS	24-well	✓	Individually wrapped, 100 plates/case
A-CP-024-NT	PS	24-well		Individually wrapped, 100 plates/case
A-CP-048-TC	PS	48-well	✓	Individually wrapped, 100 plates/case
A-CP-048-NT	PS	48-well		Individually wrapped, 100 plates/case
A-CP-096-TC	PS	96-well	✓	Individually wrapped, 100 plates/case
A-CP-096-NT	PS	96-well		Individually wrapped, 100 plates/case
A-CP-384-TC	PS	384-well	✓	Individually wrapped, 100 plates/case
A-CP-384-NT	PS	384-well		Individually wrapped, 100 plates/case

# SEROLOGICAL PIPETTE



## Features:

- ◆ Clear and precise graduations for accurate liquid volume measurement
- ◆ Color-coded bands for quick identification of pipette specifications
- ◆ Bidirectional and negative graduation lines design enables versatile quantitative liquid transfer
- ◆ Individually paper-plastic packaged to ensure sterility and safety
- ◆ Ultra-pure polystyrene material compliant with USP VI standards
- ◆ Seamless compatibility with major pipette brands on the market

**Specification:** 1mL/2mL/5mL/10mL/25mL/50mL/100mL

PART NO	MATERIAL	SPEC	STERILE	PACKING
A-SP-001-PU	PS	1mL	✓	Individually wrapped, 1000 pcs/case
A-SP-002-PU	PS	2mL	✓	Individually wrapped, 1000 pcs/case
A-SP-005-PU	PS	5mL	✓	Individually wrapped, 500 pcs/case
A-SP-010-PU	PS	10mL	✓	Individually wrapped, 500 pcs/case
A-SP-025-PU	PS	25mL	✓	Individually wrapped, 250 pcs/case
A-SP-050-PU	PS	50mL	✓	Individually wrapped, 200 pcs/case
A-SP-100-PU	PS	100mL	✓	Individually wrapped, 100 pcs/case



## Tubes & Bottles



## SCREW CAP CRYOVIAL TUBE



### Features:

- ◆Capacity: 0.5mL / 1.5mL / 2.0mL, Skirted or non-skirted options for centrifuge compatibility, Conical (space-saving) or self-standing (stable workbench use) designs
- ◆Screw cap and tube body crafted from medical-grade polypropylene (PP), Withstands repeated freeze-thaw cycles (-80°C) and autoclaving (121°C, 1 bar)
- ◆External screw cap design minimizes aerosol exposure during handling
- ◆The external cap design can reduce the contamination probability during sample treatment

**Specification:** 0.5mL/1.5mL/2.0mL. Black/Yellow/Blue/Red/Purple/White

PART NO	MATERIAL	VOLUME	COLOR	SPEC	PCS /CASE
ACT05-BL-N	PP	0.5mL	Black, Yellow, Blue, Red, Purple, White	With Skirt(stand up)	5000
ACT15-BL-N	PP	1.5mL	Black, Yellow, Blue, Red, Purple, White	With Skirt(stand up)	5000
ACT15-BL-NW	PP	1.5mL	Black, Yellow, Blue, Red, Purple, White	Without Skirt(can't stand up)	5000
ACT20-BL-N	PP	2.0mL	Black, Yellow, Blue, Red, Purple, White	With Skirt(stand up)	5000

# CENTRIFUGE TUBE



## Features:

- ◆ 1.5mL / 2.0mL / 5mL / 15mL / 50mL volumes to suit diverse workflows
- ◆ RNase-/DNase-Free, Human DNA-Free, and Non-Pyrogenic (validated for sensitive applications)
- ◆ One-handed operation with leak-proof sealing
- ◆ Frosted or white labeling surface for smudge-resistant sample tracking
- ◆ Ultra-high centrifugal stability: withstands up to  $12,000 \times g$  (RCF)
- ◆ Clear, permanent scale markings ensure accurate volume measurement in molecular biology, clinical chemistry, and biochemical research

**Specification:** 1.5mL/2.0mL/5mL/15mL/50mL,Clear

PART NO	MATERIAL	VOLUME	COLOR	SPEC	PCS /CASE
ACT-015-EP	PP	1.5mL	Clear	Conical bottom	5000
ACT-020-EP	PP	2.0mL	Clear	Conical bottom	5000
ACT-050-EP	PP	5.0mL	Clear	Conical bottom	2000
ACT150-SC-N	PP	15mL	Clear	Conical bottom	500
ACT500-SC-N	PP	50mL	Clear	Conical bottom	500

## SPIN COLUMNS



### Features:

- ◆Optimized silica membrane effectively binds DNA and RNA for versatile extraction workflows
- ◆High Capacity: Adsorption column load up to 10 µg
- ◆High Purity: Typical OD260/OD280 ratio of 1.7–1.9
- ◆Loading Volume: 750µL
- ◆Efficiently extracts DNA from: Bacteria, viruses, yeast, Cultured cells, whole blood, urine, Buccal swabs, animal tissues
- ◆Material: Polypropylene (PP) outer tube, silicone-based membrane

**Specification:** 2.0mL

PART NO	MATERIAL	VOLUME	COLOR	SPEC	PCS /CASE
A-SC02-TW	PP	2.0mL	Clear	U bottom	Tubes:15000pcs/case Columns:10000pcs/case

## PLASTIC REAGENT BOTTLE



### Features:

- ◆High-clarity, medical-grade polypropylene (PP) with no additives or mold release agents
- ◆Precision-engineered sealing ensures no leaks during use, transport, or inverted storage
- ◆Autoclavable (121°C, 15 psi) and certified non-pyrogenic, ideal for cell culture and molecular biology
- ◆Resistant to acids, bases, and common laboratory solvents (e.g., ethanol, isopropanol)

### Specification: PP/HDPE ,Clear/Brown optional

PART NO	MATERIAL	VOLUME	COLOR	PCS/BAG	BAGS/CASE	PCS /CASE
A-8ML-N	PP	8mL	Clear	200	11	2200
A-15ML-N	PP	15mL	Clear	200	9	1800
A-30ML-N	PP	30mL	Clear	100	8	800
A-60ML-N	PP	60mL	Clear	100	5	500
A-125ML-N	PP	125mL	Clear	50	6	300
A-250ML-N	PP	250mL	Clear	25	8	200
A-500ML-N	PP	500mL	Clear	10	10	100
A-1000ML-N	PP	1000mL	Clear	8	10	80
A-8ML-B	PP	8mL	Brown	200	11	2200
A-15ML-B	PP	15mL	Brown	200	9	1800
A-30ML-B	PP	30mL	Brown	100	8	800
A-60ML-B	PP	60mL	Brown	100	5	500
A-125ML-B	PP	125mL	Brown	50	6	300
A-250ML-B	PP	250mL	Brown	25	8	200
A-500ML-B	PP	500mL	Brown	10	10	100
A-1000ML-B	PP	1000mL	Brown	8	10	80

PART NO	MATERIAL	VOLUME	COLOR	PCS/BAG	BAGS/CASE	PCS /CASE
A-8ML-NH	HDPE	8mL	Clear	200	11	2200
A-15ML-NH	HDPE	15mL	Clear	200	10	2000
A-30ML-NH	HDPE	30mL	Clear	100	8	800
A-60ML-NH	HDPE	60mL	Clear	100	10	1000
A-125ML-NH	HDPE	125mL	Clear	50	6	300
A-250ML-NH	HDPE	250mL	Clear	25	8	200
A-500ML-NH	HDPE	500mL	Clear	10	10	100
A-1000ML-NH	HDPE	1000mL	Clear	8	10	80
A-8ML-BH	HDPE	8mL	Brown	200	11	2200
A-15ML-BH	HDPE	15mL	Brown	200	10	2000
A-30ML-BH	HDPE	30mL	Brown	100	8	800
A-60ML-BH	HDPE	60mL	Brown	100	10	1000
A-125ML-BH	HDPE	125mL	Brown	50	6	300
A-250ML-BH	HDPE	250mL	Brown	25	8	200
A-500ML-BH	HDPE	500mL	Brown	10	10	100
A-1000ML-BH	HDPE	1000mL	Brown	8	10	80





A close-up photograph of medical consumables. In the foreground, a blue stethoscope is partially visible. To its right, a clear plastic syringe with an orange plunger and a needle is shown. In the background, a pair of blue nitrile gloves is visible. The entire scene is set against a white background with blue medical drapes.

## Medical Consumables

## Ear Thermometer Probe cover

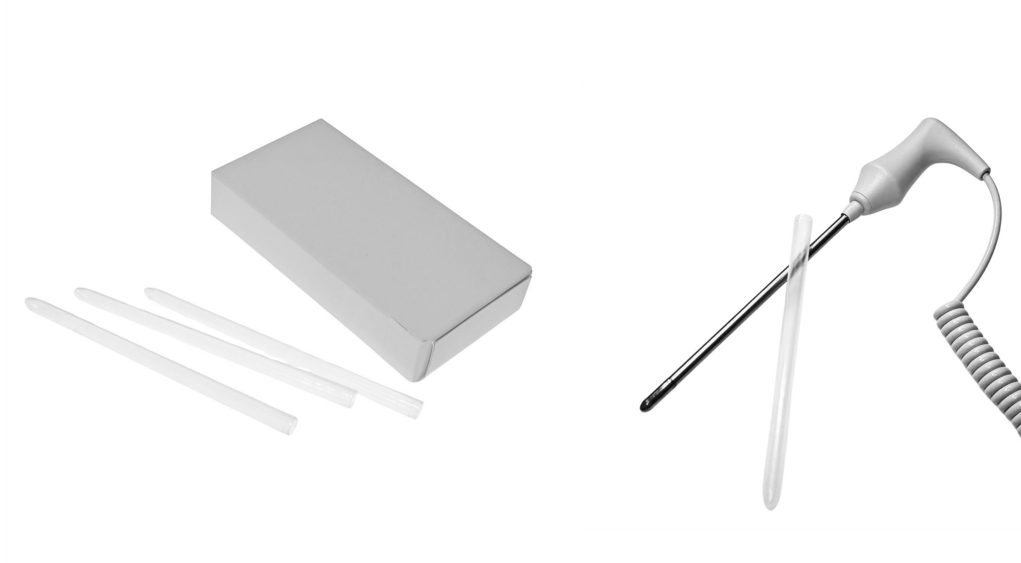


### Features :

- ◆Perfect fit for all Braun Thermoscan® models, including IRT 6520, IRT3020/4020/4520/6020, PRO4000/PRO6000, and more
- ◆Made from medical-grade, BPA-free & latex-free materials
- ◆Shields thermometer lenses from scratches, dust, and residue to prolong device lifespan
- ◆Ultra-thin design ensures unimpeded infrared transmission for reliable temperature readings
- ◆Prevents cross-contamination between users—replace after each measurement
- ◆OEM/ODM customization available for bulk orders

PART NO	MATERIAL	SPEC	APPLICATION	COLOR	PCS /CASE
A-EB-PC-20	PP	WA-BR	IRT&PRO series Thermoscan Device	Clear	20000

## Oral/Axillary/Rectal Thermometer Probe cover



### Features :

- ◆Designed exclusively for Welch Allyn SureTemp® Thermometers: Models 678, 679, 690, and 692
- ◆Safely adapts for oral, rectal, or axillary temperature measurements with universal fitment
- ◆Single-use design eliminates cross-contamination risks between patients, aligning with clinical hygiene protocols
- ◆Enables one-handed operation for seamless workflow, minimizing disruption during patient care
- ◆Latex-free construction ensures compatibility with sensitive skin and allergy-prone users
- ◆Shields thermometer probes from residue buildup, extending device lifespan and accuracy
- ◆OEM/ODM customization available for bulk orders

PART NO	MATERIAL	SPEC	APPLICATION	PCS/BOX	PCS /CASE
A-ST-PC-25	PE	WA-ST	Welch Allyn SureTemp 690&692 Thermometer	25	10000

## Ear Otoscope Specula



### Features :

- ◆ Precisely engineered for Ri-Scope® L1/L2 EliteVue Macro-Otoscope, Heine®, Welch Allyn®, Dr. Mom™, and other standard pocket otoscopes
- ◆ Single-use disposable design eliminates cross-contamination risks in ENT examinations
- ◆ Rounded, tapered tip ensures gentle insertion for pediatric and adult ear/nasal procedures
- ◆ Easy insertion into ear and nose, specula are optimally shaped
- ◆ Made of Medical grade PP material
- ◆ OEM/ODM customization available for bulk orders

**Specification** : 2.0mm, 2.75mm(Pediatric) 4.0mm, 4.25mm(Adult)

PART NO	MATERIAL	SPEC	APPLICATION	COLOR	PCS /CASE
A-RS-20-B	PP	2.0MM	Only for Riester Ri-Scope L2 Otoscope and EliteVue Macro-Otoscope	Black	10000
A-RS-40-B	PP	4.0MM	Only for Riester Ri-Scope L2 Otoscope and EliteVue Macro-Otoscope	Black	10000
A-ES-275-B	PP	2.75MM	Ri-scope L1 and L2, Heine, Welch allyn and Dr.Mom ect Brand pocket Otoscopes	Black	8500
A-ES-425-B	PP	4.25MM	Ri-scope L1 and L2, Heine, Welch allyn and Dr.Mom ect Brand pocket Otoscopes	Black	8500

## Digital Thermometer Cover



### Features:

- ◆Precisely fits most digital thermometers for oral, rectal, or axillary use
- ◆Hypoallergenic polyethylene (PE) material – BPA-free, latex-free, and ISO 10993 biocompatibility certified
- ◆Prevents cross-contamination between users – ideal for households, clinics, and pediatric care
- ◆Peel-and-discard operation enables one-handed use – no direct probe contact required
- ◆OEM/ODM customization available for bulk orders

PART NO	MATERIAL	SPEC	APPLICATION	PCS/BOX	PCS /CASE
A-DT-PC	Paper+PE	JZ-001	Digital Thermometer	100	20000



## Luer Cap



### Features:

- ◆Universal Luer compatibility with compliant syringes
- ◆Medical-grade PE
- ◆Standard female Luer lock connector
- ◆Bulk packaging (10000pcs/pouch)
- ◆OEM/ODM customization available for bulk orders

PART NO	MATERIAL	SPEC	APPLICATION	PCS/BAG	PCS /CASE
A-LC-PO-20	PE	LC-01	Syringe(Luer Lock)	10000	50000

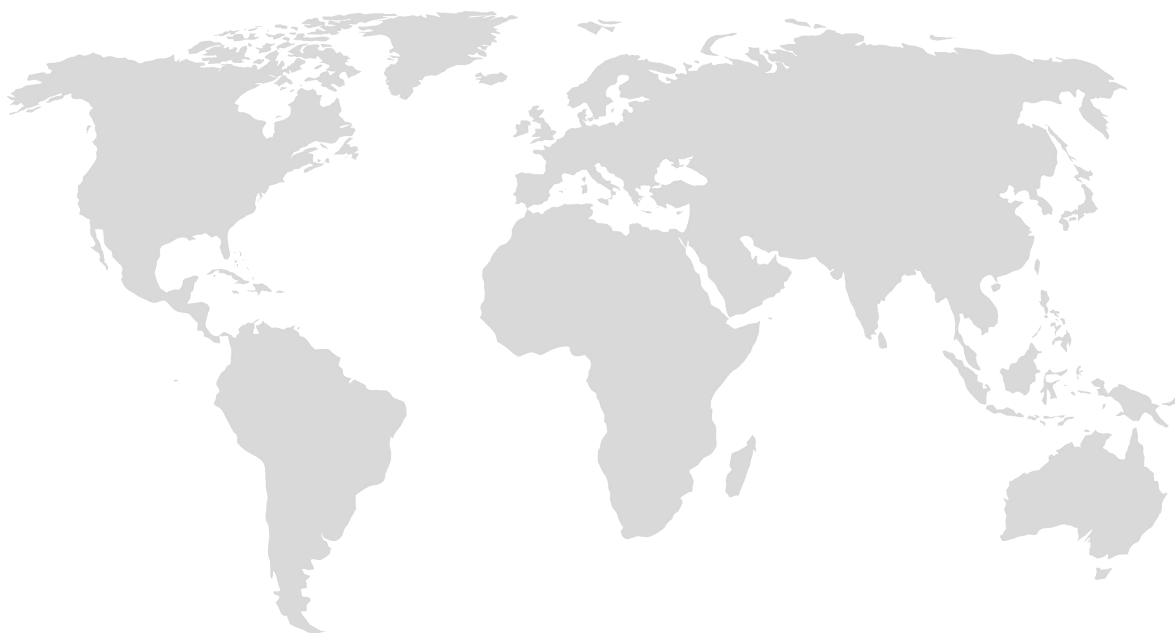
## DISPOSABLE/REUSABLE INJECTION PEN



### Features :

- ♦Optimized structure and materials minimize injection force, enabling smooth drug delivery with reduced discomfort
- ♦Used for self-management of chronic diseases (e.g., insulin, growth hormone), precision drug delivery (e.g., interferons, biologics), privacy-sensitive medications (e.g., high-end cosmetic injectables), and advanced therapies (e.g., PD-1/PD-L1 inhibitors)
- ♦Dosing accuracy meets ISO 11608-1 and YY/T 1768-1 technical standards
- ♦Black-and-white dose indicators enhance visibility, ensuring clarity for visually impaired users
- ♦Audible clicks and tactile cues during dose adjustment and injection improve confidence and reliability
- ♦OEM/ODM customization available for bulk orders

PART NO	Type	Size	Dose range	Min dose inc	Dosing accuracy	Compatible with cartridges	Applicable needle type
A-IP-DS-800	Disposable	Ø 17mmXØ 170mm	1-80 IU (10-800 µL) or Customization	1IU(10µL)	≤5% (ISO 11608-1)	3 mL cartridge (ISO 11608-3)	Luer needle (ISO 11608-2)
A-IP-RS-600	Reusable	Ø 19mmXØ 162mm	1-60 IU (10-600 µL)	1IU(10µL)	≤5% (ISO 11608-1)	3 mL cartridge (ISO 11608-3)	Luer needle (ISO 11608-2)



**SUZHOU ACE BIOMEDICAL TECHNOLOGY CO., LTD.**

📍 No. 6, Ousheng Avenue, Pingwang Town, Wujiang District, Suzhou City, China

☎ +86 0512-63283668

📞 +8618912386807

📞 +8618912386807

✉️ Joeeyren@ace-biomedical.com/Info@ace-biomedical.com

🌐 www.ace-biomedical.com



Scan the code for more information